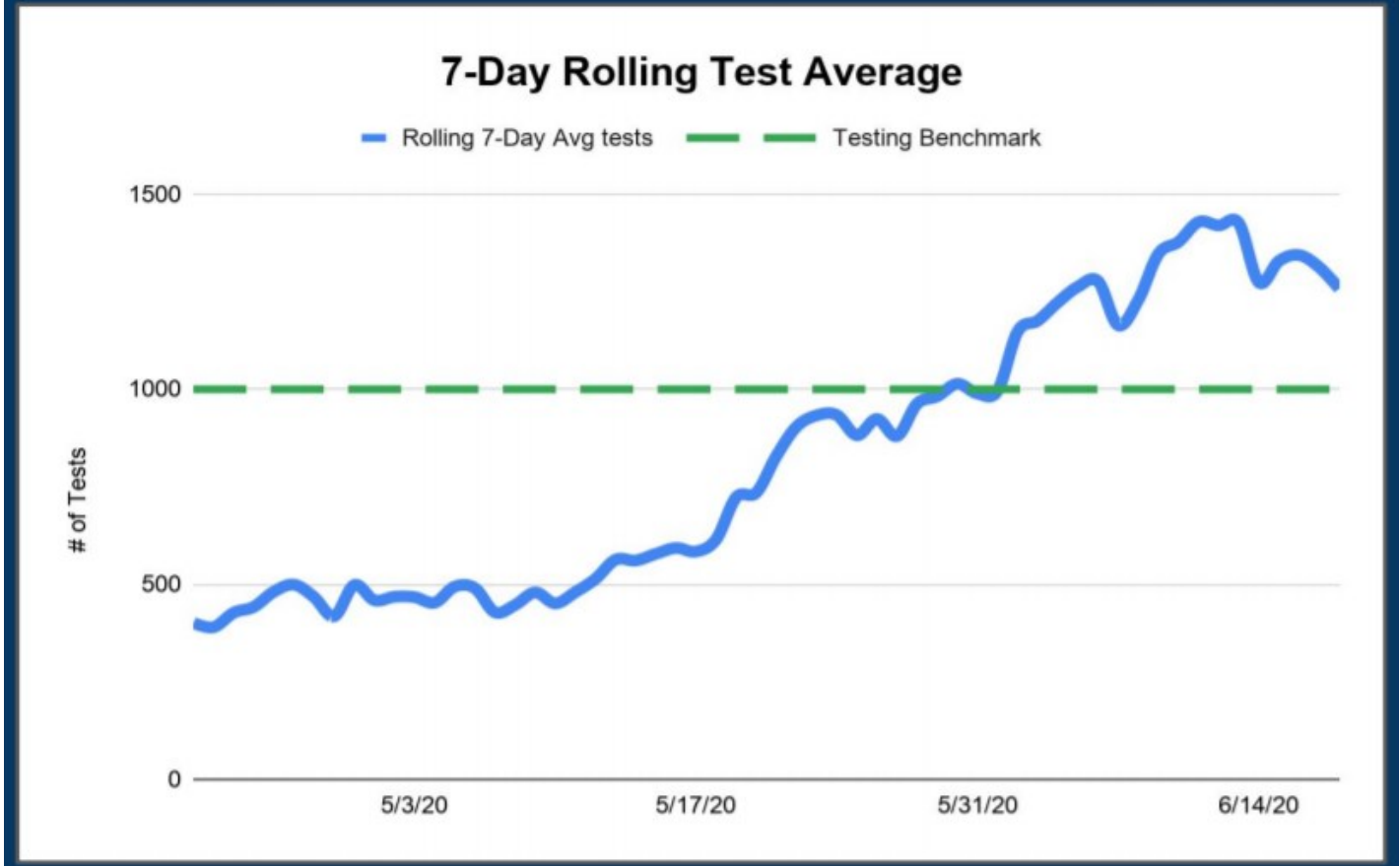


Increased Vermont Testing



A slide from Commissioner Peciak's presentation Friday on COVID-19 data modeling.

Incident Name:
COVID-19 Response

Reporting Period:
06/22/2020 08:00 AM - 06/22/2020 04:00 PM

Situation Report Number:
72

EOC Activation Level:
Partial Activation



Vermont State Emergency Operations Center

Situation Report

Phil Scott, Governor

Erica Bornemann,
Director
(800) 347-0488
45 State Drive
Waterbury, VT
05671

Background / Current Situation

On June 22, 2020 the Vermont State Emergency Operations Center (SEOC) was partially activated from 0800 to 1600, using a completely virtual structure. The SEOC will be partially activated every day until further notice.

Current status in Vermont, last updated by the Health Department at 1200 on 6/22/20:

Total positive test results for COVID-19	1,163
Total tests for COVID-19	58,607
Deaths	56
Total people recovered	926
People being monitored	1,142*
People who have completed monitoring	1,241
Hospitalized patients with COVID-19	0
Hospitalized patients under investigation for COVID-19	8

These numbers are reported once daily covering a 24-period from midnight to midnight.

*As of June 15th, this metric includes people who are being monitored in Sara Alert, which provides free daily symptom check reminders for 14 days while they are quarantining. There are two groups of people being monitored through Sara Alert:

- People traveling to Vermont from out of state. (Travelers are strongly encouraged to enroll.)
- Close contacts of people with COVID-19. (People who are identified as close contacts are enrolled unless they opt out.)

Sara Alert allows COVID-19 response teams to quickly and easily provide guidance to people if they develop symptoms. It is not GPS-based, so it does not monitor someone's movement or track their location. For more information about Sara Alert, visit the [travel page](#).

6/19-6/21 Call Statistics from 211:

- 211 received 54 calls related to COVID-19 on Friday, Saturday, and Sunday. The vast majority of calls were from the general public (51 calls).
- The most common call topics were testing (16 calls), basic needs (15 calls), and travel (15 calls) (topics are not mutually exclusive, i.e., calls can touch on multiple topics).

FEMA

- A Major Disaster Declaration has been approved for Vermont: FEMA-4532-DR-VT
- FEMA is tracking the following Resource Request Forms (RRFs) in progress:
 - HEPA filters
 - PPE including gloves, coveralls, aprons, boot covers, and N95 masks
 - 6 pallets of 750 mL hand sanitizer
 - 119,000 cloth face coverings

Economic Mitigation and Recovery Task Force

AGENCY OF COMMERCE AND COMMUNITY DEVELOPMENT (ACCD):

- The US Small Businesses Administration reopened the Economic Injury Disaster Loan (EIDL) and EIDL Advance program portal to all eligible applicants experiencing economic impacts due to COVID-19. The EIDL program offers long-term, low interest loans for small businesses and nonprofits that can be used to cover payroll and inventory, pay debt, or fund other expenses. The EIDL Advance program will provide up to \$10,000 of emergency economic relief grants to businesses that are currently experiencing temporary difficulties.
- The Paycheck Protection Program provides small businesses with funds for payroll costs and is taking applications until June 30, 2020. More than \$100 billion in PPP funds are still available. Small businesses can use funds for up to 24 weeks and have the option of extending the life of the loan from two years to five. SBA will forgive loans if funds are used as intended.

DEPARTMENT OF LABOR (DOL):

- We now have an active Fraud Unit at the Department and are meeting with the full Unemployment Insurance Taskforce on a weekly basis. Vermonters are encouraged to report suspected fraud to the Department by contacting our fraud tip line at 802-828-4101. This line is exclusively for fraud reports. The fraud webpage is now available at: <https://labor.vermont.gov/ui-fraud>.
- The Department is holding daily Q&A sessions with its call takers from Maximus, so they are able to answer more questions when claimants call rather than adding them to an escalation sheet for unemployment insurance staff to follow up on.
- On June 16th, the unemployment insurance call volume was 3,608 and the average hold time was 18 seconds.
- Unemployment insurance claims overview, June 7 – June 13 (does not include PUA numbers)
 - Continued Claims: 43,338 (down from 45,207)
 - New Claims: 1,859 (up from 1,650)
 - Estimated Total Claims: 45,1970 (down from 48,280)
 - Payments: over \$12.5 million paid last week (compared to over \$13 million the previous week)
 - Trust Fund Balance: \$384 million (down from \$396 million the previous week)

VERMONT OCCUPATIONAL SAFETY AND HEALTH ADMINISTRATION (VOSHA):

- The Department of Labor hosted a virtual town hall for workers and employers about state and federal guidance to protect Vermont workers as workplaces open, including training materials developed by VOSHA. The session is available for viewing anytime here: <https://bit.ly/VTLabor-Youtube>

Logistics Branch

Resource Requests:

- No pending requests at this time.

Department of Human Resources (DHR):

- Medical Reserve Corps (MRC) medical volunteer activity:
 - 132 volunteers total, 91 currently activated (no change)

Building and General Services (BGS):

- BGS is currently assisting in the evaluation of potential semi-permanent locations for the VT Foodbank to continue food distribution for Farmers to Families Phase 4 in July and August.

Health & Medical Branch

Health & Medical Branch

Daily summary of hospital bed availability

- Number of COVID-19 patients hospitalized: 0 positive, 8 persons under investigation
- Number of COVID-19 patients discharged from hospital: 0
- Total hospital beds available: 447
- Intensive Care Unit (ICU) beds available: 39
- Medical/surgical beds available: 190
- Isolation beds available: 82

Hospital resource needs

- **Personnel** - none known at this time, but may require additional personnel for the Offense-Minded Testing Strategy.
- **Equipment** - none known at this time, but may require additional equipment for the Offense-Minded Testing Strategy.
- **Supplies** - none known at this time, but may require additional supplies for the Offense-Minded Testing Strategy.

Alternate Care Facility Status Report

- No pending resource needs are known at this time as there are zero patients at the Essex Alternate Care Site. No admissions are expected at this time.

Human Services Branch

Gaps in Agency of Human Services (AHS) essential services due to absenteeism: none at this time

Status of Long-Term Care Facilities (Nursing Homes Only):

- Statewide Licensed Capacity: 2,978
- Current Operating Capacity: 2,699
- Census as of 6/18: 2,237 (462 available)
- Resource Needs: None
- Current Outbreaks: No known outbreaks at this time

Status of Isolation and Recovery Sites:

- The Harbor Place isolation and recovery site has a 50-bed capacity, with 8 residents as of 6/19.
- General Assistance Motel Summary, including Econo Lodge in Montpelier and Holiday Inn in South Burlington as of 6/19: 1,261 rooms; 1,476 adults; 292 children.

Statewide Mass Feeding Plan:

- Planning continues for the next phase of the Farmers to Family food distribution. It is anticipated that this phase will begin on 7/6.
- The Mass Feeding Work Group is planning on phasing down the contracts currently in place. This is in coordination with the new Recovery Plan Housing effort, which will transition clients out of motels into sustainable housing.

Medical Logistics Branch

Daily Workflow Status 6/19-6/21

- Orders Received: 17
- Orders Filled: 14
- Percentage Filled: 82%
- Total Unfilled Orders: 3
 - Long-term Care: 3

Other Updates:

- The Medical Counter Measures (MCM) Warehouse is seeking more cloth masks from FEMA (some to give to the Agency of Education), and would also like to obtain some child-sized masks if possible.
- The branch seeks to remove some of the KN95 and procedure masks out of the MCM Warehouse to make space for the materials needed for the 180-day plan.
- The branch is responding to a public records request.

Infrastructure & Emergency Services Branch

Infrastructure -

- A few customer power outages were reported during the day.
- Afternoon thunder storms have the potential to cause additional outages.

Emergency Services -

- Major Incidents - On Sunday, a few Vermont fire departments responded as mutual aid to a 5-alarm commercial fire in Jeffrey, NH. Over 35 fire departments from NH, VT, and MA responded to the fire in a massive abandoned warehouse (97,000 sq ft building).
- There is no reported absenteeism due to COVID-19.

Department/Agencies Reports

Vermont State Police (VSP)/Wilderness Search and Rescue -

Vermont Division of Fire Safety (DFS)/Urban Search and Rescue (USAR) -






- DFS is continuing to dispense hand sanitizer to emergency response agencies from the Vermont Fire Academy in Pittsford and the USAR/Hazardous Materials facility in Milton.
- USAR was requested to staff a cooling tent at a pop-up testing site on 6/23 in Springfield. Additional planning is underway for later testing sites.

Forest, Parks, & Recreation (FPR) -

- The daily (6/22) predicted fire danger for Vermont is MODERATE (Class 2) throughout the state.

Weather

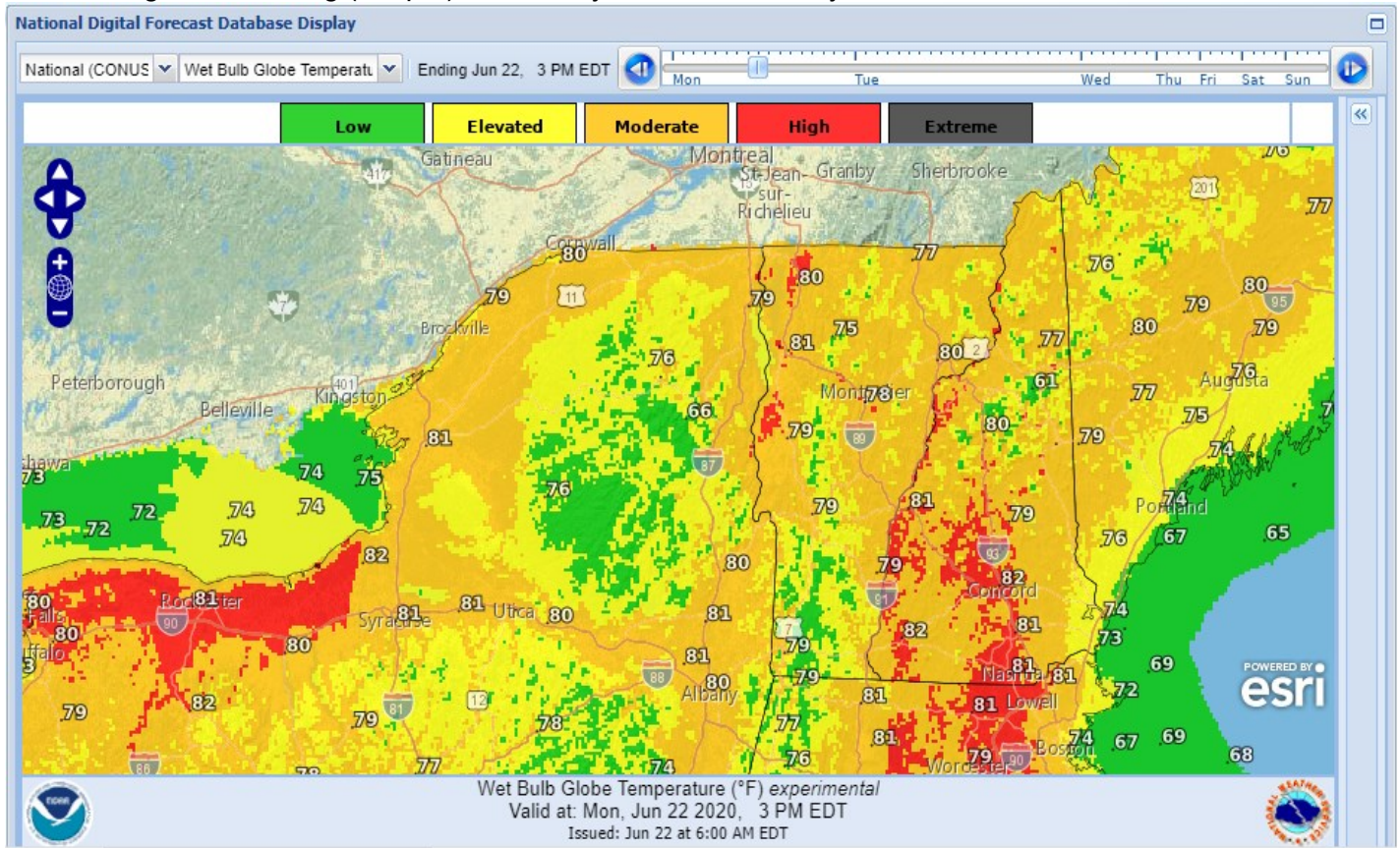
Five Day Forecast: Vermont - Washington (KTYX)

Monday	Tuesday	Wednesday	Thursday	Friday
				
Scattered Thunderstorms	Chance of Thunderstorms	Likely Rain Showers	Chance of Rain Showers	Chance of Rain Showers
88 F / 31 C 66 F / 18 C	89 F / 31 C 66 F / 18 C	81 F / 27 C 56 F / 13 C	77 F / 25 C 54 F / 12 C	75 F / 23 C 53 F / 11 C

- **Tonight:** A 20 percent chance of showers and thunderstorms before 9pm. Patchy dense fog after 1am. Otherwise, mostly cloudy, with a low around 67. Southeast wind around 6 mph.
- **Tuesday:** A 40 percent chance of showers and thunderstorms, mainly after 1pm. Mostly sunny and hot, with a high near 92. Heat index values as high as 96. South wind 5 to 9 mph. New rainfall amounts of less than a tenth of an inch, except higher amounts possible in thunderstorms.
- **Tuesday Night:** A chance of showers and thunderstorms. Mostly cloudy, with a low around 68. South wind 7 to 9 mph. Chance of precipitation is 50%. New precipitation amounts of less than a tenth of an inch, except higher amounts possible in thunderstorms.

Wet Bulb Global Temperature for OSHA/VOSHA/Military -

Valid during Peak Heating (2-5 pm) on Monday 6/22 and Tuesday 6/23.





Executive Summary

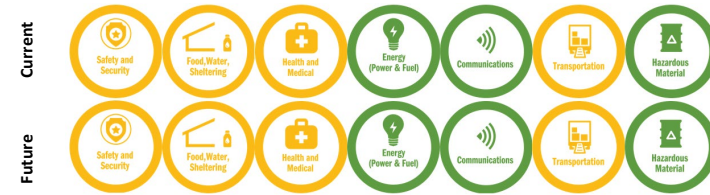
COVID-19 Response

June 22, 2020 (1600 EDT)

SEOC Activation Status: Partial
HOC Activation Status: Full
SEOC Activation Date/Time:
March 11, 2020 (0730 EDT)

Gubernatorial State of Emergency: Declared 3/13/20
Federal Emergency Declaration: Issued 3/13/20
Major Disaster Declaration: Issued 4/8/20

Community Lifeline Status

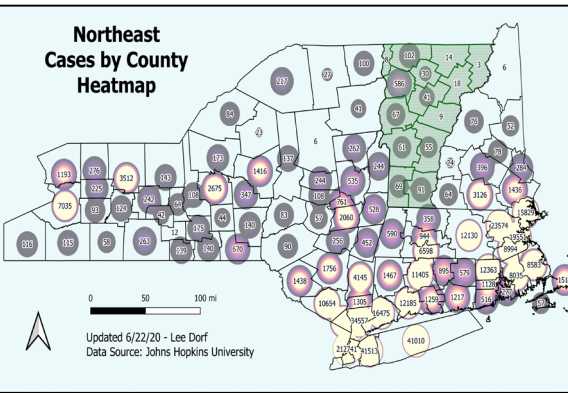


Key
 Red - most unstable or completely inadequate level of service
 Yellow - functional but inadequate for stability of a consistent level of service
 Green - stable

Lifelines: Impacts and Actions

Safety and Security	Current Situation	<ul style="list-style-type: none"> VSP continues to monitor protest activities in Vermont. The Division of Fire Safety continues to dispense hand sanitizer to emergency response agencies. USAR was requested to staff a cooling tent at a pop-up testing site on 6/23 in Springfield. Additional planning in underway for later testing sites.
	Future	<ul style="list-style-type: none"> As states begin to lift their restrictions, travel could become more prevalent and lead to an increased risk of virus transmission. Changes to travel restrictions announced on Friday allow for travel to Vermont without quarantine restrictions from surrounding out-of-state counties that have low incidence of active COVID-19 cases.
Food, Water, Sheltering	Current Situation	<ul style="list-style-type: none"> Water main break reported in Burlington today outside of The University of Vermont Medical Center. While access to water was never halted, the public has been asked to reduce water use, if possible, until repairs can be made. The Mass Feeding Work Group is planning on phasing down the contracts currently in place. This is in coordination with the new Recovery Plan Housing effort, which will transition clients out of motels into sustainable housing.
	Future	<ul style="list-style-type: none"> Planning continues for the next phase of the Farmers to Family food distribution. It is anticipated that this phase will begin on 7/6. The Department of Buildings and General Services is currently assisting in the evaluation of potential semi-permanent locations for the VT Foodbank to continue food distribution for Farmers to Families Phase 4 in July and August.
Transportation	Current Situation	<ul style="list-style-type: none"> Interstate travel to and from New England and New York counties with 400 or fewer active COVID-19 cases per million is permitted without quarantine requirements. ACCD will update the cross-state travel map each week as to which counties are permitted for travel to and from without quarantine.
	Future	<ul style="list-style-type: none"> Public transportation is not running under normal operations, and it is unclear when this would return to standard conditions. As industries begin to open up the current social distancing protocols may prove to be challenging on bus routes.

Incident Summary
 A novel coronavirus (SARS-CoV-2) was first detected in China at the end of 2019. It has now spread to almost every country, with the largest number of cases in the United States. The disease the virus causes has been named "coronavirus disease 2019" (abbreviated "COVID-19").



Key Information

Current case status in Vermont, last updated by the Health Department at 1200 on 6/22/20:

- Positive test results: 1,163
- Total tests conducted: 58,607
- Deaths: 56
- Total people recovered: 926
- Hospitalized patients with COVID-19: 0
- Hospitalized patients under investigation for COVID-19: 8

Local State of Emergency: Burlington, Colchester, Johnson, Rutland, Vernon.

Local EOCs Activated: Burlington, Chittenden, Charlestown, Hartford, Johnson, Landgrove, Londonderry, Peacham, Pittsfield, Rutland City, Sharon, South Burlington, St. Johnsbury, Strafford, Thetford, Tunbridge, Vernon, Waitsfield, Weston.

Lifelines: Impacts and Actions

Health and Medical	Current Situation	<ul style="list-style-type: none"> There are 110 cases of COVID-19 associated with an outbreak in Winooski and the surrounding communities. The median age of those infected is 24 years old. The State is providing testing and wrap-around services to residents. Registration is required for testing. On Tuesday, there will be a pop-up testing site for asymptomatic members of the public in Springfield and Winooski. Registration for both sites is full. More such testing sites for the Offense-Minded Testing Strategy are currently planned through June 26th. Available appointments at pop-up testing clinics are filling quickly. From 7am to 9am on Mondays, Wednesdays, and Fridays, there is COVID-19 testing available at the Wal-Mart in Derby. Registration is required. One Alternate Care Site is currently operating in Chittenden County with one other site on standby in Rutland County. The Chittenden County site currently has no patients. There are two new contact tracing investigations following COVID-19 cases at a worksite in Rutland County and in a residential facility in Windham County. A new inmate at Chittenden County Regional Correctional Facility tested positive for COVID-19. Contact tracing is underway, and mass testing will occur in the facility. On Saturday, all staff and inmates at the Marble Valley Regional Correctional Facility were tested for COVID-19 following the arrival last week of a new inmate who tested positive. Except for the original case, all results came back negative. All staff and inmates will be tested again on 6/29.
	Future	<ul style="list-style-type: none"> The Medical Logistics Branch is planning for additional storage and organization, as the Medical Counter Measures (MCM) Warehouse runs out of space and the branch looks to store lab testing kits and a 180-day supply of PPE.
Other Lifelines	Current Situation	<ul style="list-style-type: none"> FDA has issued a warning to not use certain hand sanitizers due to the potential presence of methanol (wood alcohol), a substance that can be toxic when absorbed through the skin or ingested. Some of these products have been tested and found to have over 80% methanol and no ethyl alcohol. Methanol is extremely toxic to humans if ingested or if absorbed through the skin, or inhaled.
	Future	<ul style="list-style-type: none"> There are minimal power outages anticipated across the state. The SEOC is continuing to monitor thunderstorms during the week.