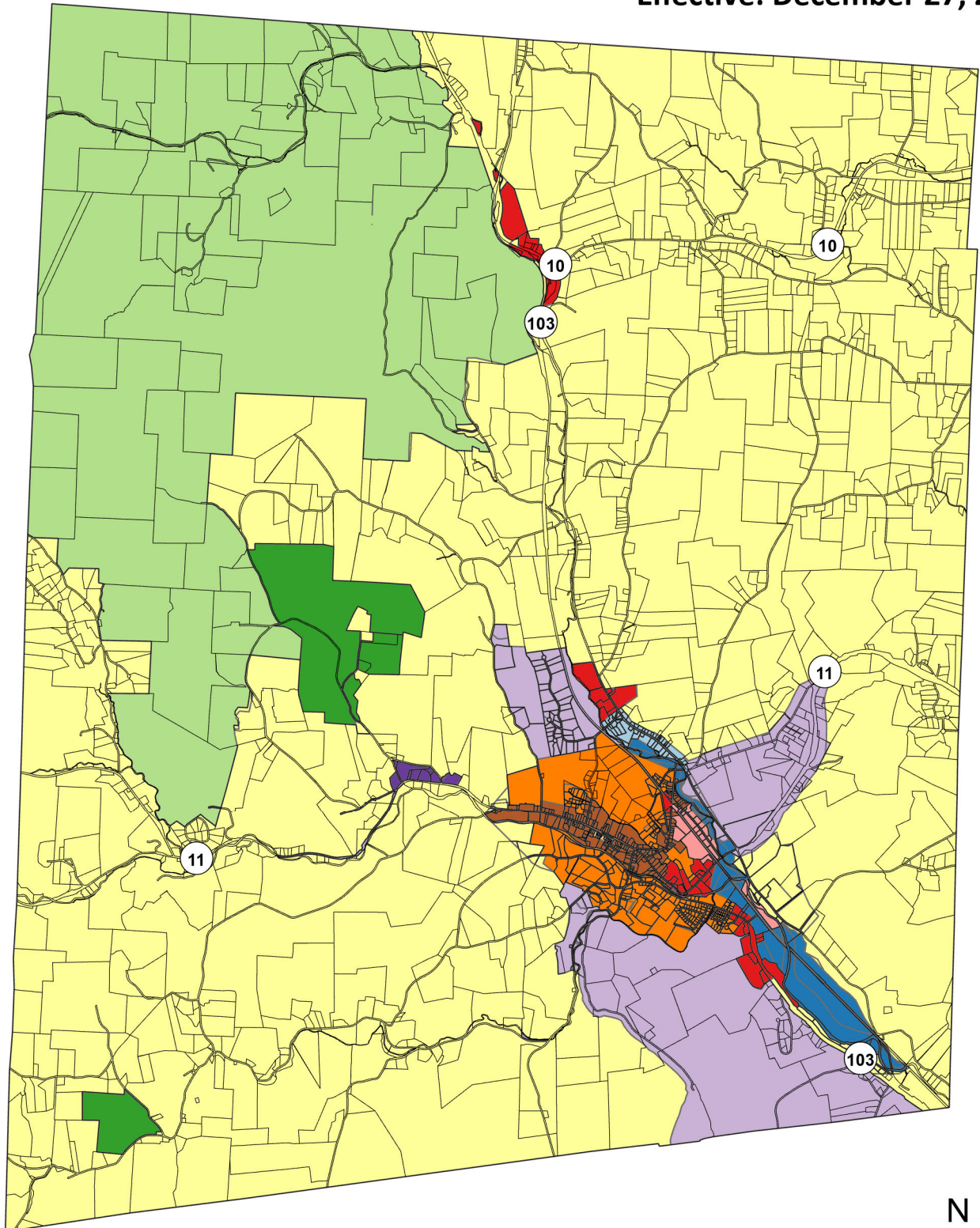
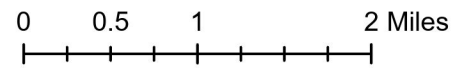


Town of Chester Zoning Districts

Adopted: December 6, 2023
Effective: December 27, 2023



- 2023 Zoning Districts**
- Adaptive
 - Conservation Residential
 - Forest
 - General Business
 - Mixed Use
 - Neighborhood
 - Open Space
 - Residential 120,000
 - Residential 40,000
 - Stone Village
 - Village Center
 - Village Green



Data sources: Zoning (RPC 2023), Parcels (VCGI 2023), Road names (VTrans 2023).

VT State Plane. Meters, NAD 83

For planning purposes only.
Not for regulatory interpretation.



P.O. Box 320, Ascutney, VT 05030
802-674-9201 www.marvct.org