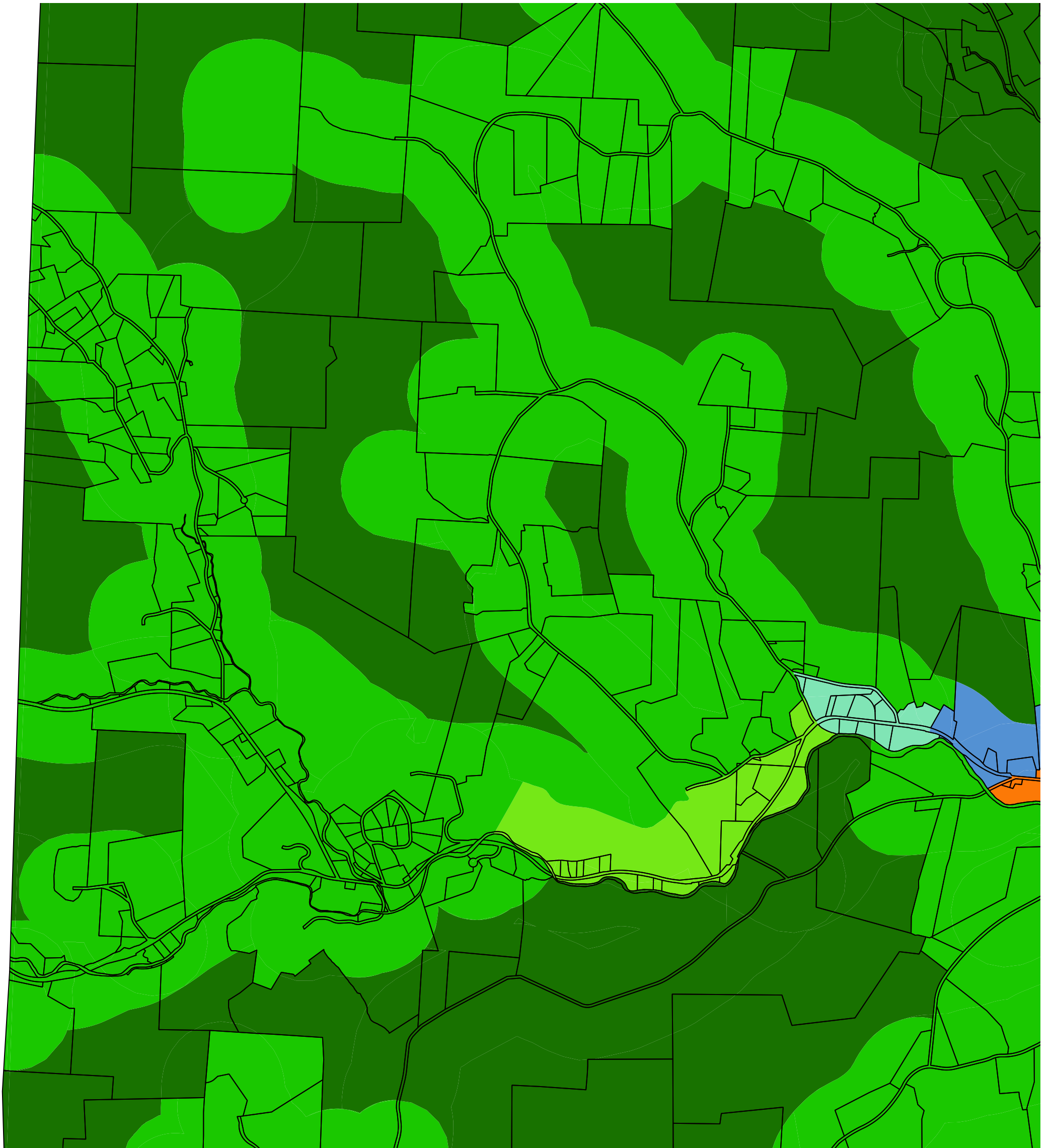
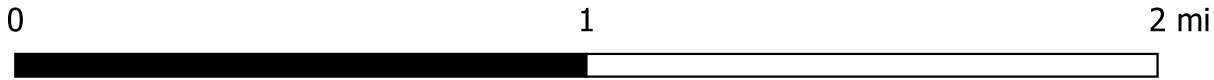


# Chester - Center West



### Current Zoning

- Commercial Industrial
- Conservation Residential
- Forest
- Residential (20,000 sq ft)
- Residential (3 acres)
- Residential (40,000 sq ft)
- Residential Commercial
- Stone Village
- Village Center

### Chester\_Draft\_Zoning\_20200518

- General Business
- Mixed Use
- Residential 2
- Residential 4
- Rural 18
- Rural 6
- Rural 3
- Stone Village
- Village 12
- Village 6
- Village 4