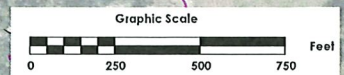
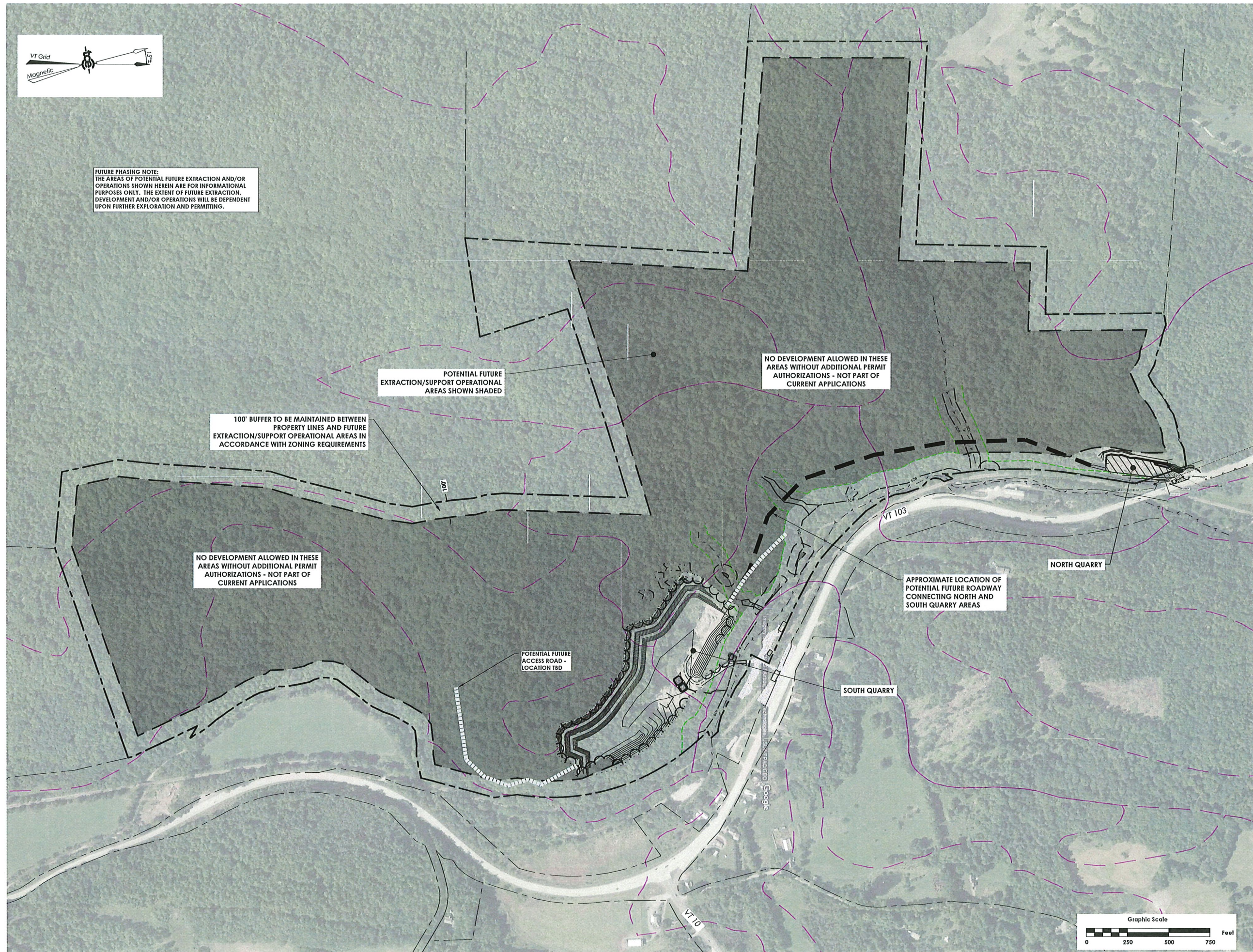


FUTURE PHASING NOTE:
THE AREAS OF POTENTIAL FUTURE EXTRACTION AND/OR OPERATIONS SHOWN HEREIN ARE FOR INFORMATIONAL PURPOSES ONLY. THE EXTENT OF FUTURE EXTRACTION, DEVELOPMENT AND/OR OPERATIONS WILL BE DEPENDENT UPON FURTHER EXPLORATION AND PERMITTING.



ENGINEERING • SURVEY
PLANNING • ENVIRONMENTAL
418 BLAIR PARK ROAD | WILKISTON, VERMONT 05495
802.879.8331 | WWW.TCEVE.COM

Revisions	No.	Description	Date	By
▲		Revisions for Local Permitting	06/30/2023	CMJ
▲		Boundary Line Revision	07/06/2023	CMJ
▲		Reissue for Local DRB	12/04/2023	JMM

Exhibit TT

- Use of these Drawings**
- Unless otherwise noted, these Drawings are intended for preliminary planning, coordination with other disciplines or utilities, and/or approval from the regulatory authorities. They are not intended as construction drawings unless noted as such or marked approved by a regulatory authority.
 - By use of these drawings for construction of the Project, the Owner represents that they have reviewed, approved, and accepted the drawings, obtained all necessary permits, and have met with all applicable parties/disciplines. Including but not limited to, the Engineer and the Architect, to insure these plans are properly coordinated including, but not limited to, contract documents, specifications, owner/contractor agreements, building and mechanical plans, private and public utilities, and other pertinent permits for construction.
 - Owner and Architect, are responsible for final design and location of buildings shown, including an area measured a minimum five (5) feet around any building and coordinating final utility connections shown on these plans.
 - Prior to using these plans for construction layout, the user shall contact TCE to ensure the plan contains the most current revisions.
 - These Drawings are specific to the Project and are not interchangeable. As instruments of service, these drawings, and copies thereof, furnished by TCE are its exclusive property. Changes to the drawings may only be made by TCE. If errors or omissions are discovered, they shall be brought to the attention of TCE immediately.
 - It is the User's responsibility to ensure this copy contains the most current revisions.



For Local Permitting Only

Project Title
Allstone Vermont
VT 103
Chester, VT

Sheet Title
Overall North and South Site Plan

Date: 05/31/2023
Scale: 1" = 250'
Project Number: 22-270
Drawn By: CMJ
Project Engineer: CMJ
Approved By: JMM
Field Book:

C2-000